

Using the BrailleNote Apex as a Braille Display



Greg Stilson, Product Specialist

Question?



Did you know that you can run a screen reader such as JAWS version 12 or Window-Eyes on your PC?

OR VoiceOver on your Mac or iPhone using your Apex as its braille display?



Why would I want to?

In addition to having the full suite of KeySoft applications, (Word Processor, Planner, Book Reader, etc), the Apex can be connected as a fully functional braille display and interface with mainstream computer applications.



Why the Apex?

- ñ Apex already has a fully functioning 18 or 32 cell braille display.
- ñ Apex is no thicker than a standard braille display and fits nicely in front of a computer
- ñ Apex can connect to the computer using bluetooth or USB interface.
- ñ Apex keyboard can control your computer using familiar KeySoft style commands



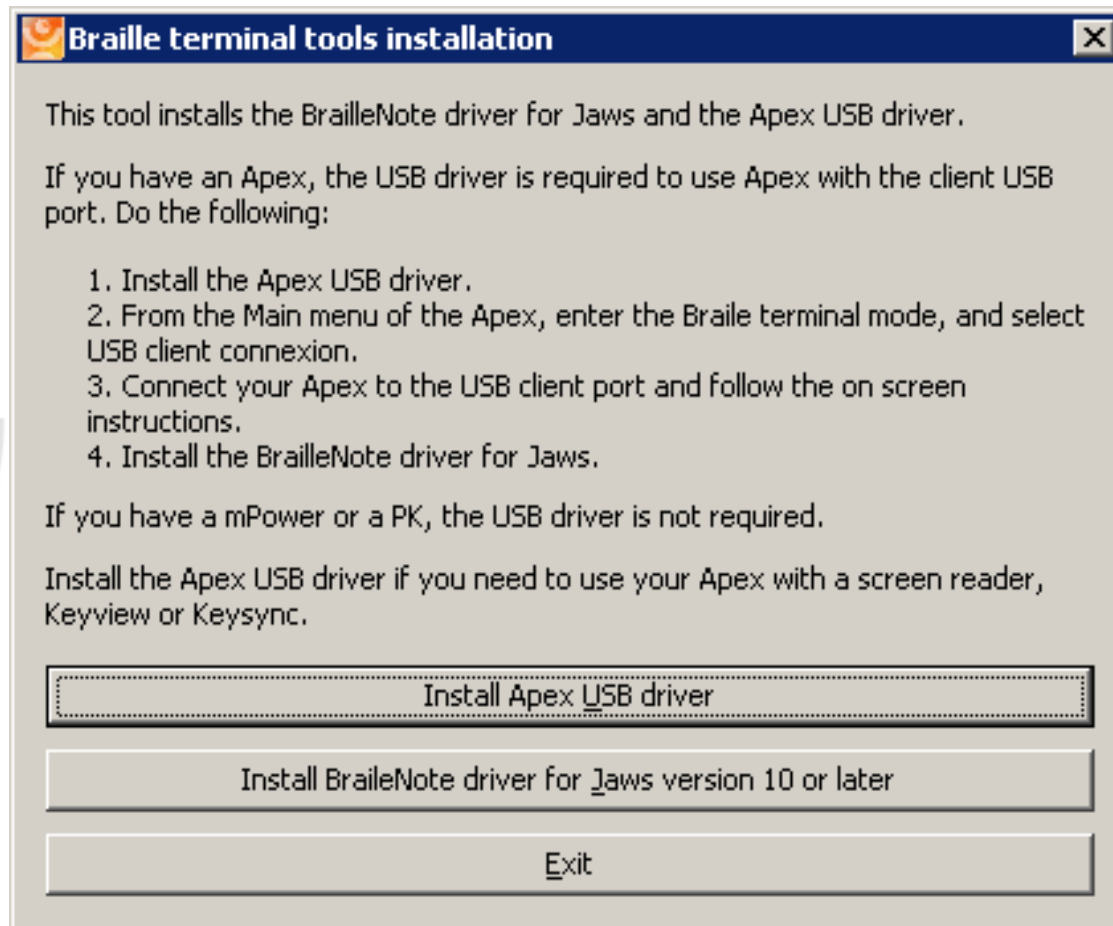
What are the benefits?

- Run Jaws 12 or Voice Over, input from the Apex in contracted (grade 2) braille.
- Run mainstream applications such as Microsoft Power Point or Excel controlled by the Apex.
- Use the Apex with a bluetooth connection, and “drive” a Power Point Presentation from a distance.
- Interact with your audience while reading slides and bullet points in braille.

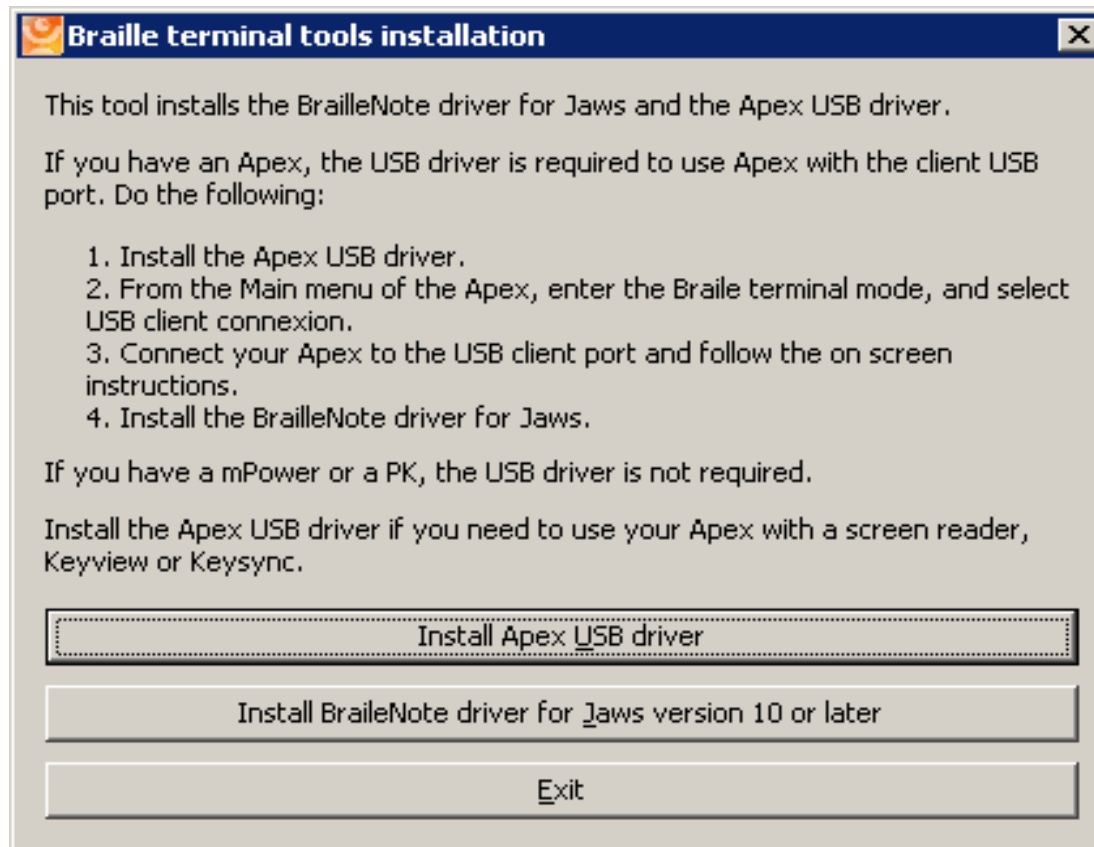
How do I connect my Apex as a display?

1. Before connecting your Apex to your PC using the USB cable, your PC must have the braille terminal driver installed and your Apex must be running at least KeySoft 9.1.
2. Download this driver from:
www.humanware.com/braillenote_support
(driver also available on the CD included with Apex)

To install the driver, run the downloaded file Braille Terminal Tools.exe



Install the USB driver or press Alt-U to start the installation. This process will preinstall the driver files on your computer.



Activate braille terminal mode on the Apex

- Ⓜ Main Menu
- Ⓜ t for terminal
- Ⓜ u for USB
- Ⓜ enter



Connecting to the Apex

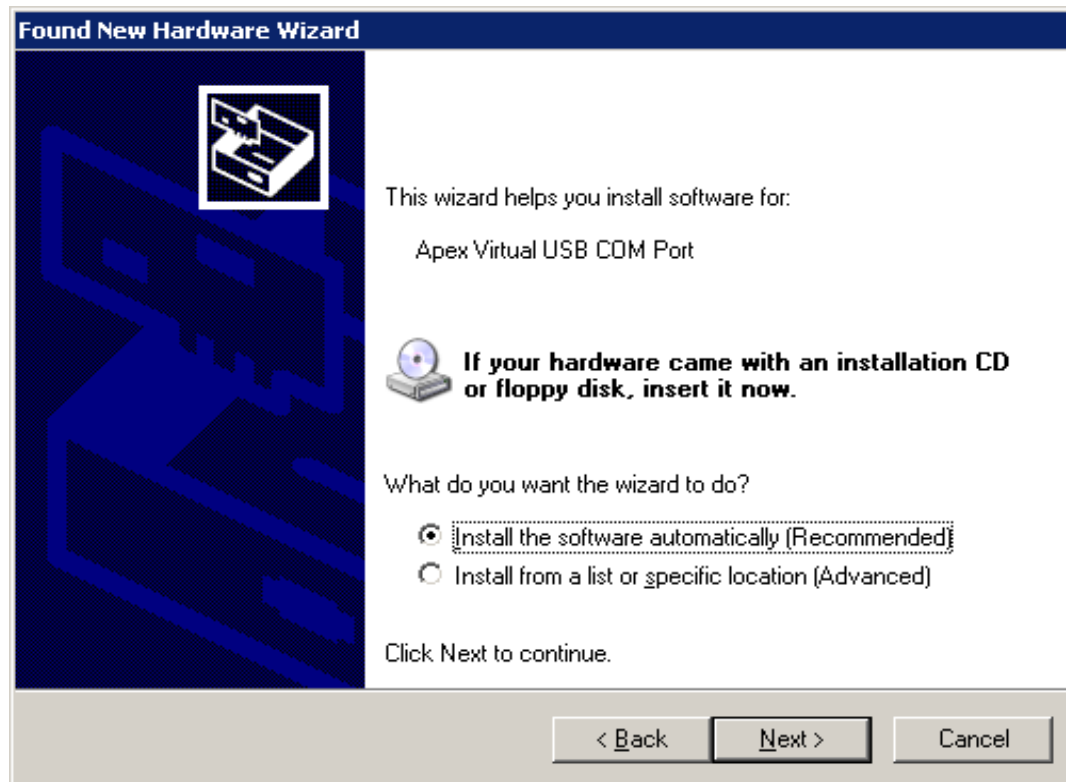


Connect the small end of the client USB cable into the rectangular port on the right side of the Apex, just below the AC power jack. Plug the standard USB end into a USB port on your PC. A rising tone will indicate that the PC has recognized the connection.

You will be presented with a Found new hardware wizard, most likely asking if you want to use Windows update to check for the drivers. Select the "Not at this time" radio button and select the NEXT button.



Select the "Install the software automatically" radio button and select the NEXT button.



1. A warning stating that these drivers have not passed windows logo testing. Simply select the "**Continue anyway**" button.

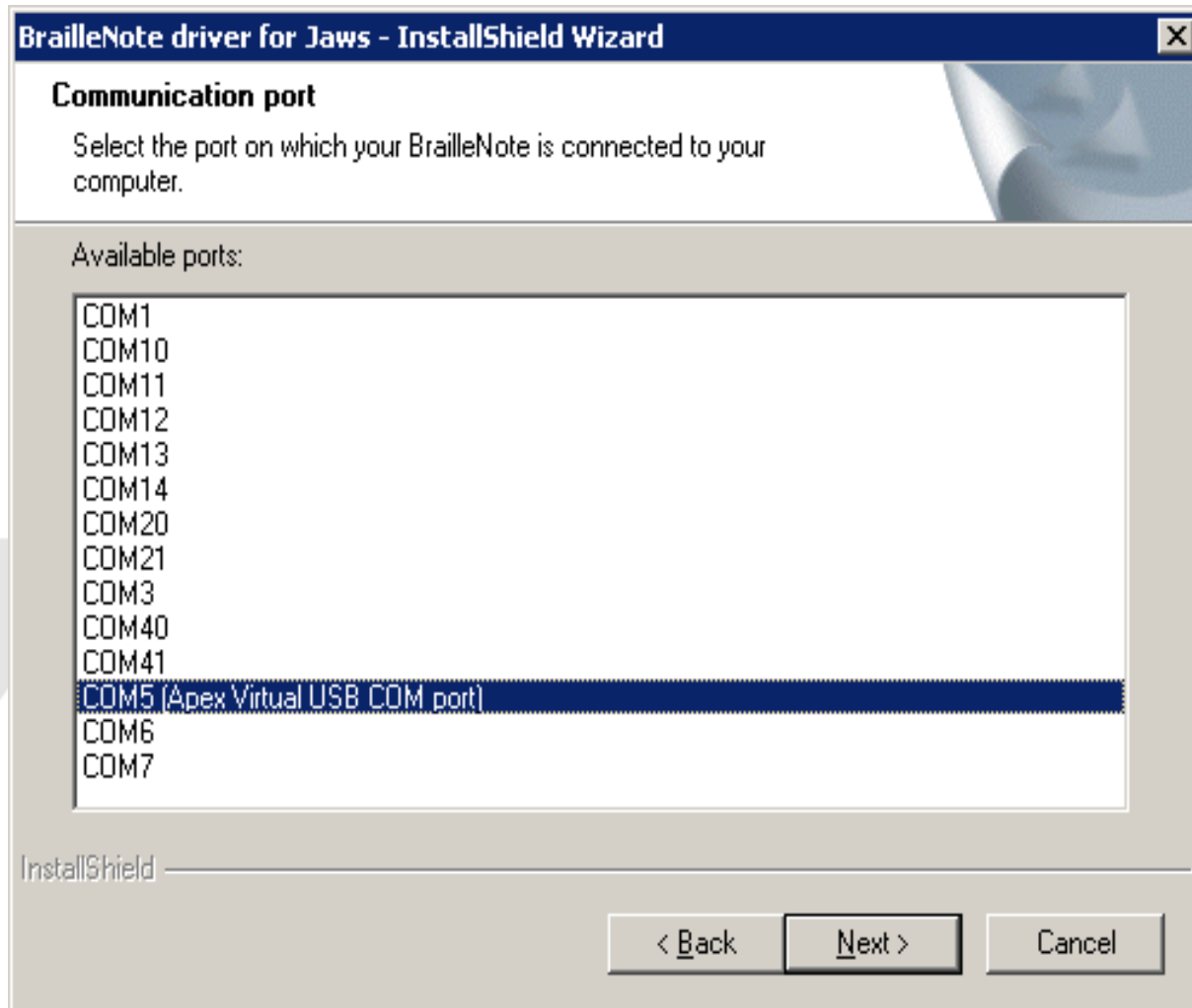


2. After installation has been completed, you will be presented with a completion message.
3. Click FINISH to conclude the installation.

Installing JAWS Driver

- Again using the downloaded Terminal Tools installer, Select Install BrailleNote driver for JAWS or press **Alt-J** to start the installation.
- Select NEXT to continue.
- On the next screen, select the BrailleNote's communication port from the list. If your Apex is connected to the USB client port, it will be automatically detected by your computer.

Press next to continue.



1. Select **INSTALL** to start the JAWS driver installation.
2. Select **YES** to use your BrailleNote as your default Braille display.
3. Click **FINISH** to conclude the installation process.

If JAWS is already running, close it and restart for changes to take effect.



SUCCESS!!

Restart JAWS



Apex will display the spoken content in braille and the Braille or QWERTY keyboard will be able to be used to control the PC functions.



Download “Using BrailleNote Apex as a Braille Display”
or request a print version!

- Step by step installation instructions
- Keyboard commands



BrailleNote™
APEX

Using BrailleNote APEX
as a Braille Display

Humanware™

Thank you for attending!

www.humanware.com

support@humanware.com

800-722-3393 US